

QEB

PRODUCT SPECIFICATION
QEB

Materials Housing, Cover-Al
Ambient operating temperature -40°C ≤ Tamb ≤ +60°C
Protection rating Ex d IIC T6, IP66
Housing standard color MUNSELL No.7.5BG 7/2

QEB Explosion Proof Solenoid Valve Box

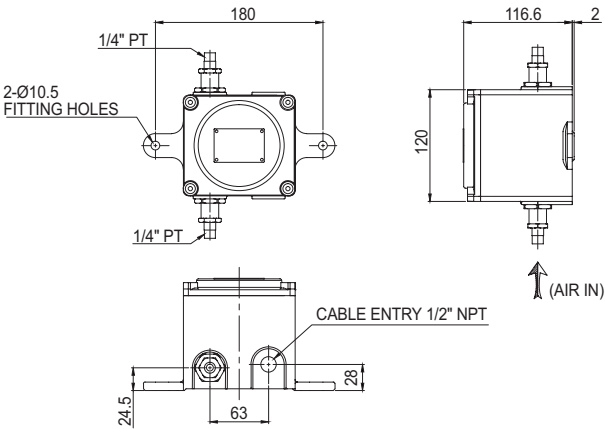
Model number	Voltage	Current	Certificates	Weight	Color
QEB	DC24V	0.450A		1.19kg	
	AC110V	0.160A		1.07kg	
	AC220V	0.075A		1.07kg	

※ If you need a product for use in a vehicle or in a place subject to severe vibration or impact, please contact us.

Technical Diagram

Units: mm

·QEB



Customization

· explosion proof cable gland configuration

Ordering Specification

QEB	-	24
[Model number]		[Voltage]
QEB		24-DC24V
		110-AC110V
		220-AC220V